

SPEC SHEET + MEASUREMENTS

SPORT-TEK

Sport-Tek® Tricot Sleeve Stripe Track Jacket. JST94

Product photo



The classic tricot track jacket with pieced stripes and rib knit details.

- 100% polyester tricot
- 100% polyester rib knit cuffs and hem
- Soft-brushed backing
- Cadet collar
- Tag-free label
- Reverse coil zipper
- Pieced stripe on shoulders and sleeves
- Front pockets

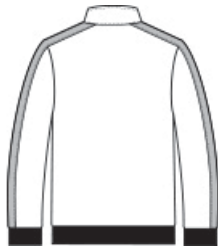
CARE INSTRUCTIONS

Machine wash cold. Gentle cycle with like colors. Use mild detergent, remove immediately. Do not allow to lay on itself when wet. Do not bleach. Tumble dry low. Cool iron, if needed.

Sketches



front



back

SPEC SHEET + MEASUREMENTS

SPORT-TEK

Sport-Tek® Tricot Sleeve Stripe Track Jacket. JST94

PRODUCT MEASUREMENTS

| | XS | S | M | L | XL | 2XL | 3XL | 4XL |
|--------------------------------|--------|--------|--------|----|--------|--------|--------|-----|
| Body Length at Back | 26 | 27 | 28 | 29 | 30 | 31 | 31 1/2 | 32 |
| Chest | 19 1/2 | 21 | 22 1/2 | 24 | 25 1/2 | 27 | 29 | 31 |
| Sleeve Length from Center Back | 34 3/4 | 35 1/2 | 36 1/4 | 37 | 37 3/4 | 38 1/2 | 39 1/4 | 40 |

Body Length at Back: Measured from high point shoulder to finished hem at back.

Chest: Measured across the chest one inch below armhole when laid flat.

Sleeve Length from Center Back: Measure from Center Back neck to shoulder point to sleeve hem.

SIZE CHARTS

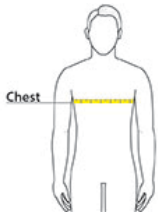
| | XS | S | M | L | XL | 2XL | 3XL | 4XL |
|-------|-------|-------|-------|-------|-------|-------|-------|-------|
| Chest | 32-34 | 35-37 | 38-40 | 41-43 | 44-46 | 47-49 | 50-53 | 54-57 |

SPEC SHEET + MEASUREMENTS



Sport-Tek® Tricot Sleeve Stripe Track Jacket. JST94

HOW TO MEASURE



CHEST
Measure under the arm and around the fullest part of the chest with arms down, keeping tape horizontal.

COLORS



Black/ Black
PMS BLACK
C



Black/ White
PMS BLACK
C



Graphite/
Black



Graphite/
Black



True Navy/
White
PMS 533C



True Royal/
White
PMS 7687C